

1. Product specification - Technical data

Article number	140298
Type	FN025-4EK.W8.V7
Designation	Axial fan with sickle blades
Rated values	1~230V 50Hz P ₁ 48W 0.24A ΔI=0% 1370/min 1.5uF/400V 55°C 1~230V 60Hz P ₁ 55W 0.23A ΔI=0% 1600/min 1.5uF/400V 70°C
Electrical connection	Terminal box K09
ErP Data	Not subject to the regulations of ErP directive (P ₁ < 125 W)
Type of protection	IP44 EN60034-5
Thermal class	THCL155
Min. operating temperature	-25°C
Connection diagram	1360-177X
Rating plate	1x fixed
Fitting position	H/Vu/Vo
Motor protection	thermal contact
Impregnation	Moisture and hot climate protection
Condensation	Condensation water holes in stator/rotor open
Quality of bearings	ball bearing with long-time lubrication
Material Rotor	Aluminium
colour rotor	RAL 5002 (ultramarine blue)
Material blades	High Performance Composite Material
Colour blades	black
Guard grille type	ring grill
Painting mot.suspens	Motor suspension powder-coated resistance class 2 (L-TI-0585)
colour suspension	RAL 9005 (jet black)
Weight	2.50 kg

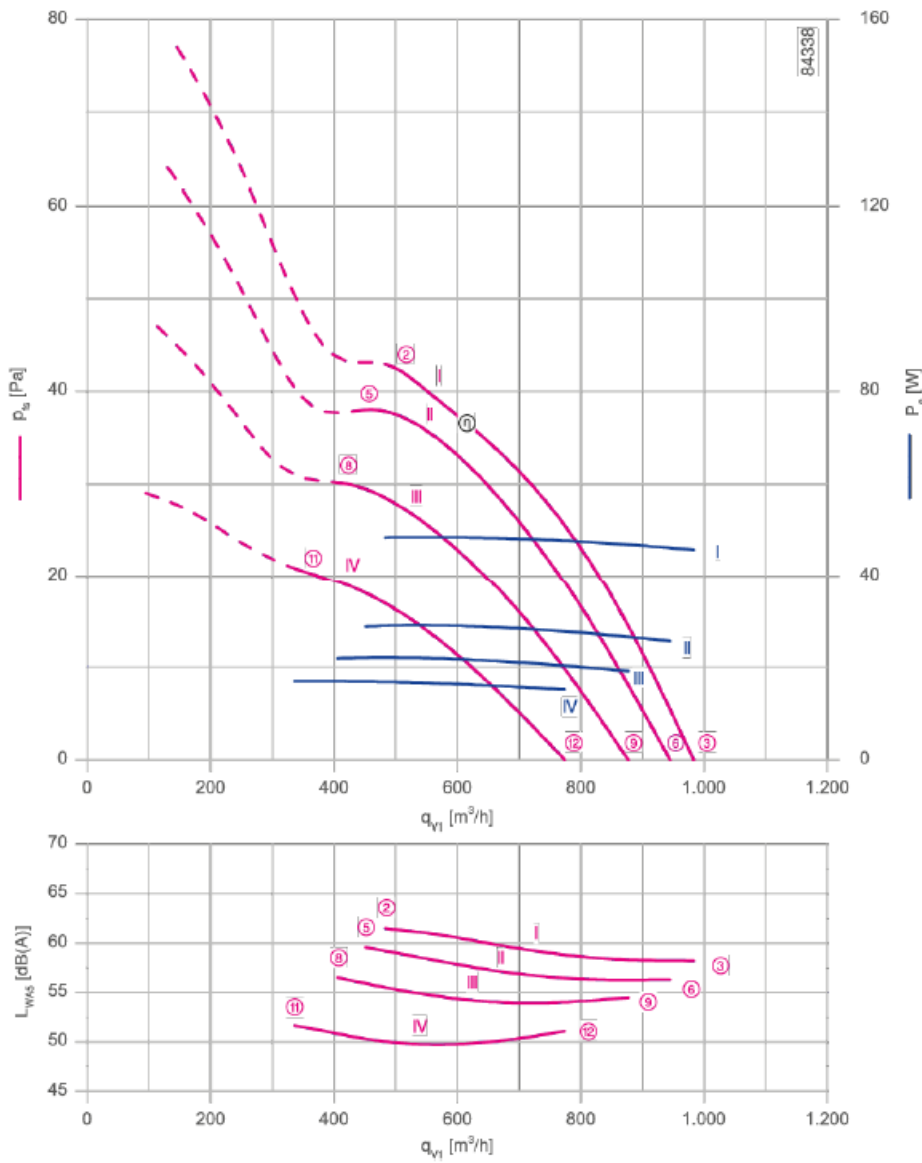
The Royal League

Die Königsklasse

Hata! Belgede belirtilen stilde metne rastlanmadı.
 Hata! Belgede belirtilen stilde metne rastlanmadı.

2. Characteristic curve

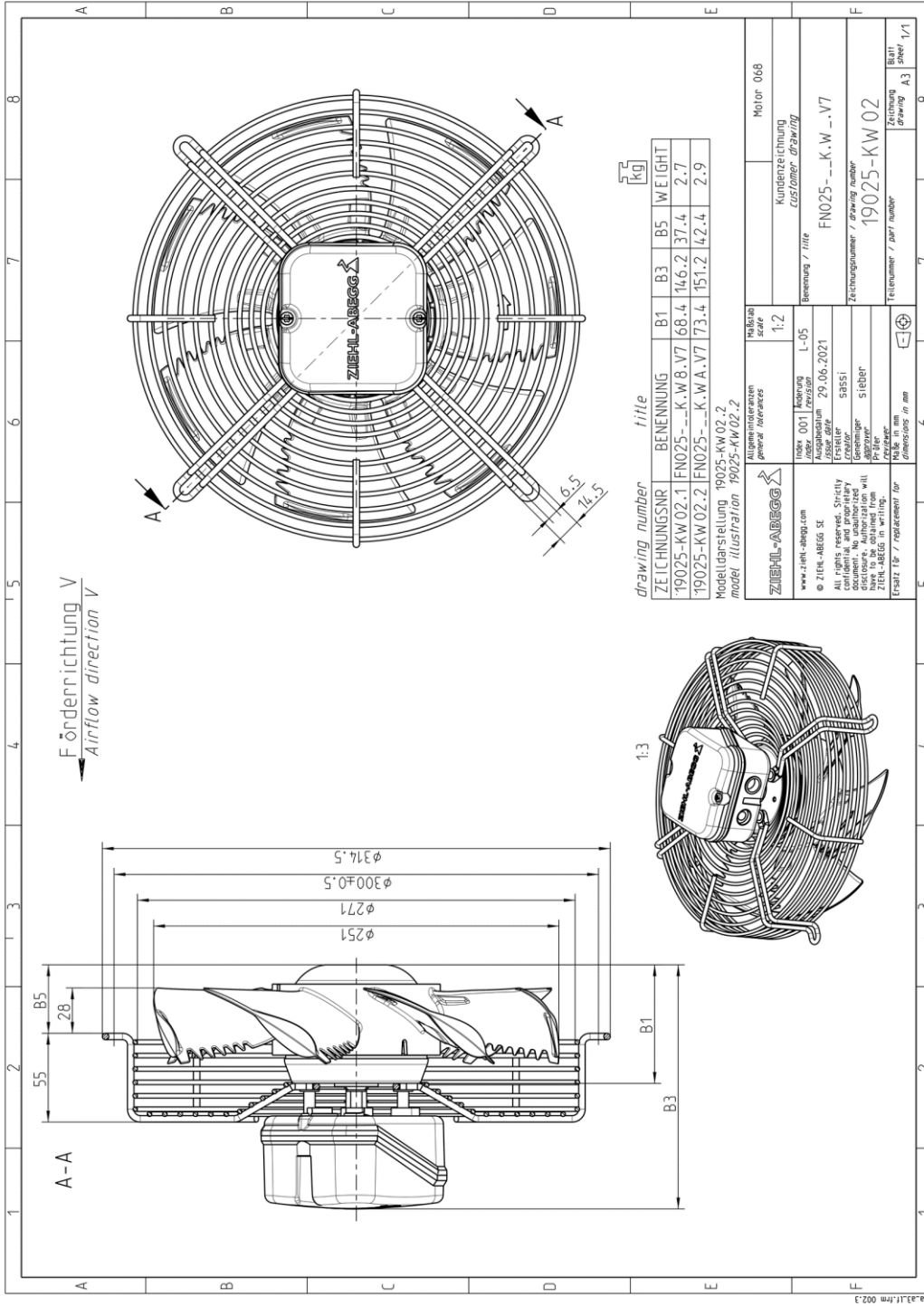
Frequency: 50 Hz



The Royal League Die Königsklasse

Hata! Belgede belirlen stilde metne rastlanmadı.
Hata! Belgede belirlen stilde metne rastlanmadı.

3. Drawing



Dimensions in m

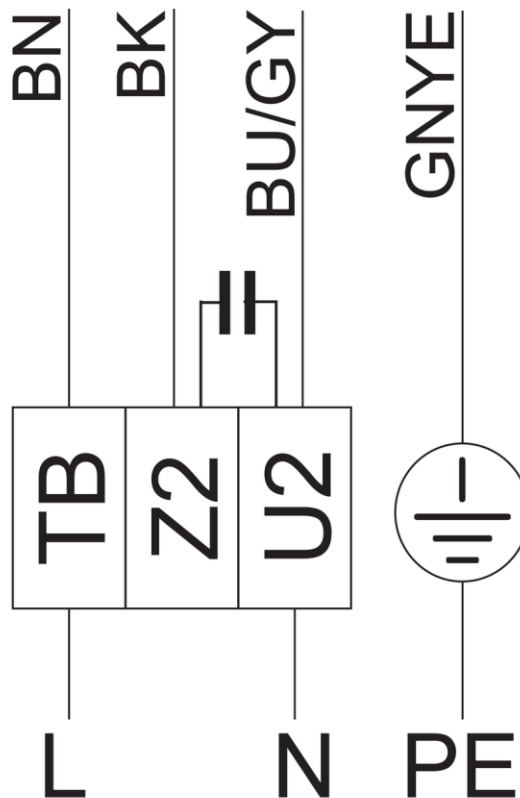
Hata! Belgede
belirtilen stilde
metne
rastlanmadı.
Hata! Belgede
belirtilen stilde
metne
rastlanmadı.

4. Connection diagram

1~ Motor mit Kondensator und
Thermostatschalter.

1~ motor with capacitor and
thermostatic switch.

177X-04



BN - braun, brown
BK - schwarz, black
BU/GY- blau oder grau, blue or grey
GNYE - grün-gelb, green-yellow